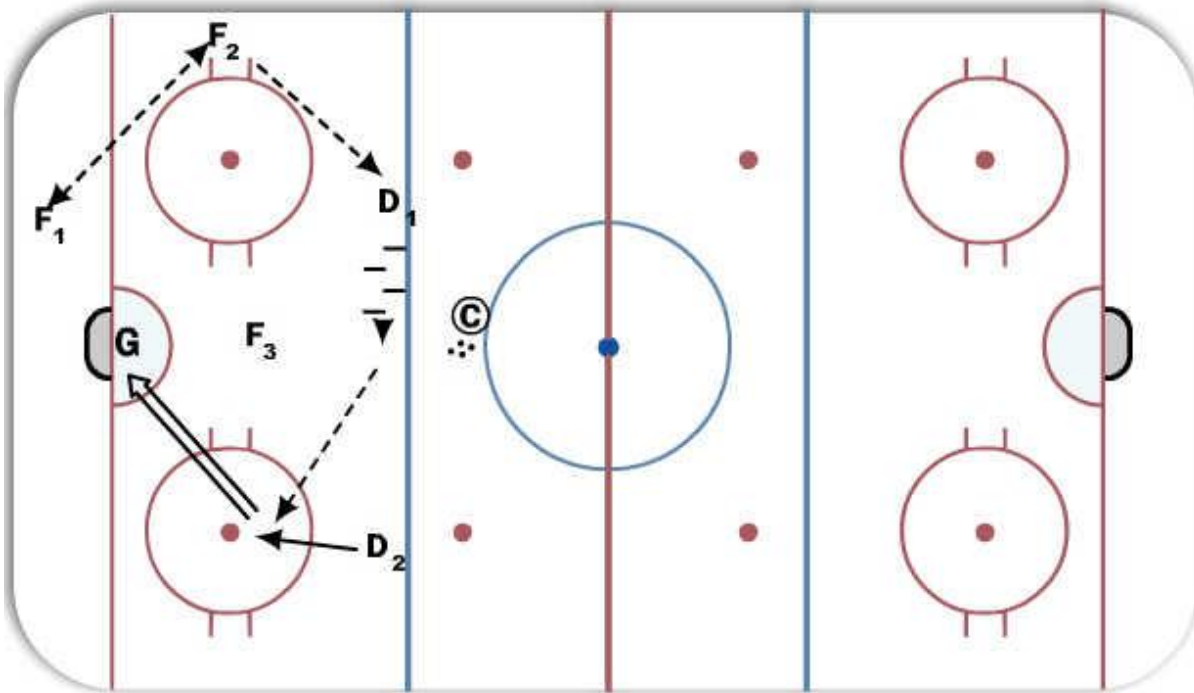


PP Options Sequence #3



Description

F1 and F2 to read penalty killers position and take advantage of ice given.

Work the puck down low to bring PK's down low.

F2 to read when PK's are out of position and work puck to D1.

D1 to quickly pass puck to D2.

D2 to read and react to F2 position and move to top of weak side faceoff circle and be ready for one timer pass from D1.

Progression

Work in PK's and be aggressive.

Key Points: Quick accurate passes., one timer., stick on ice at all times.

Notes

D2 should be right-hand shot.

If play is in opposite side then Dmen are to work left-hand shot to D2 position.